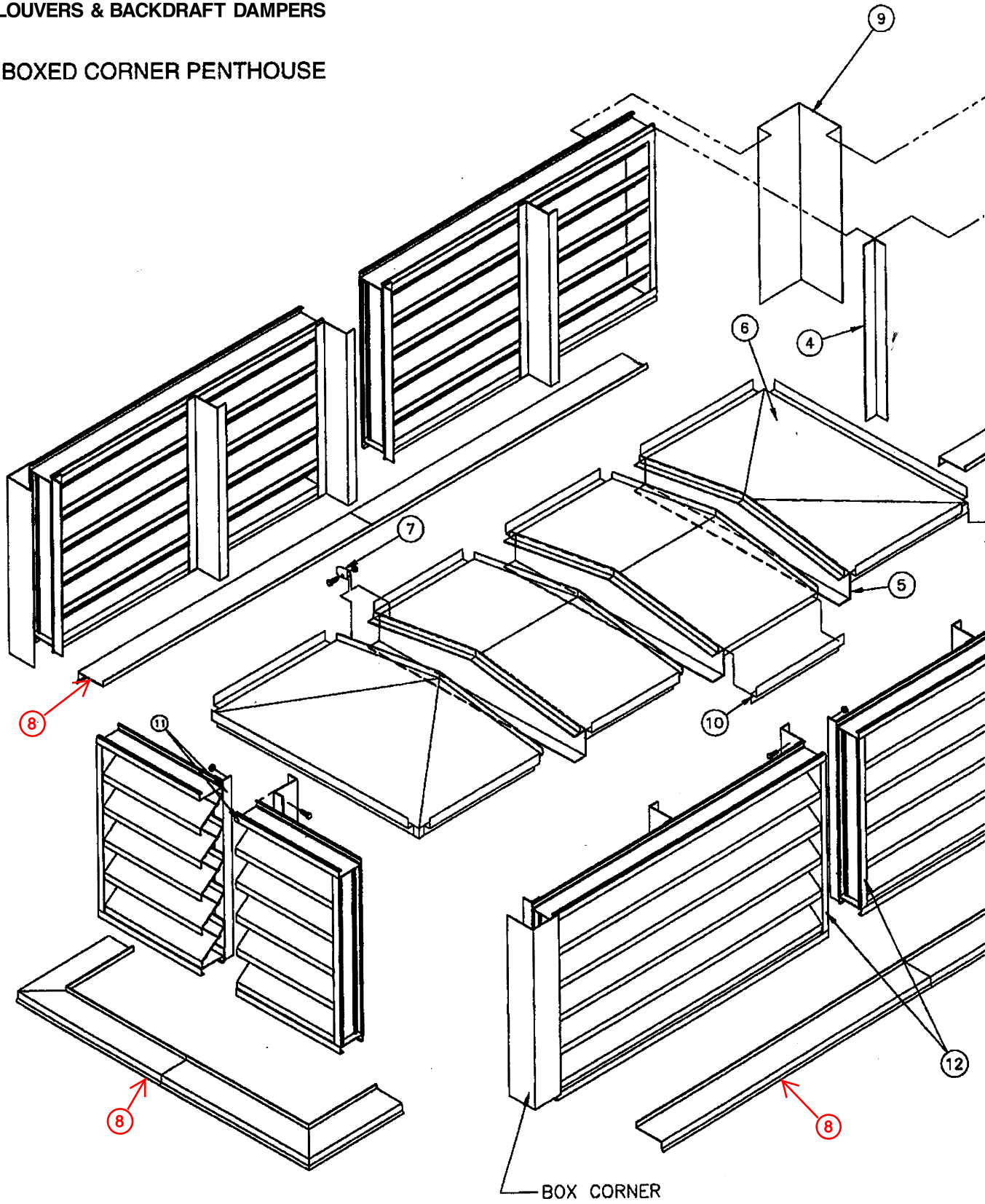
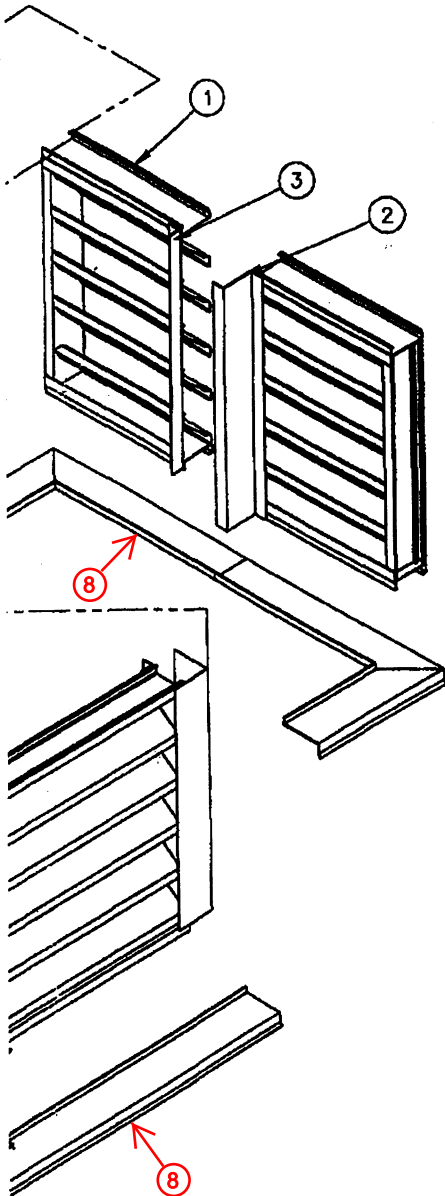


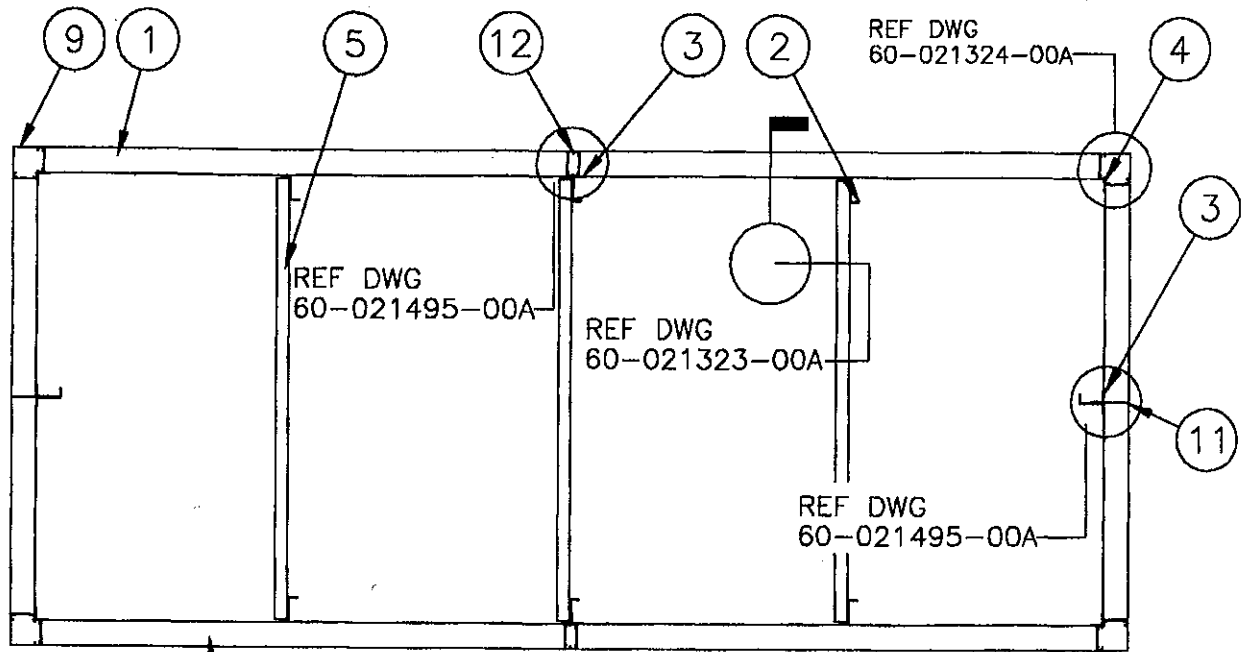
BOXED CORNER PENTHOUSE



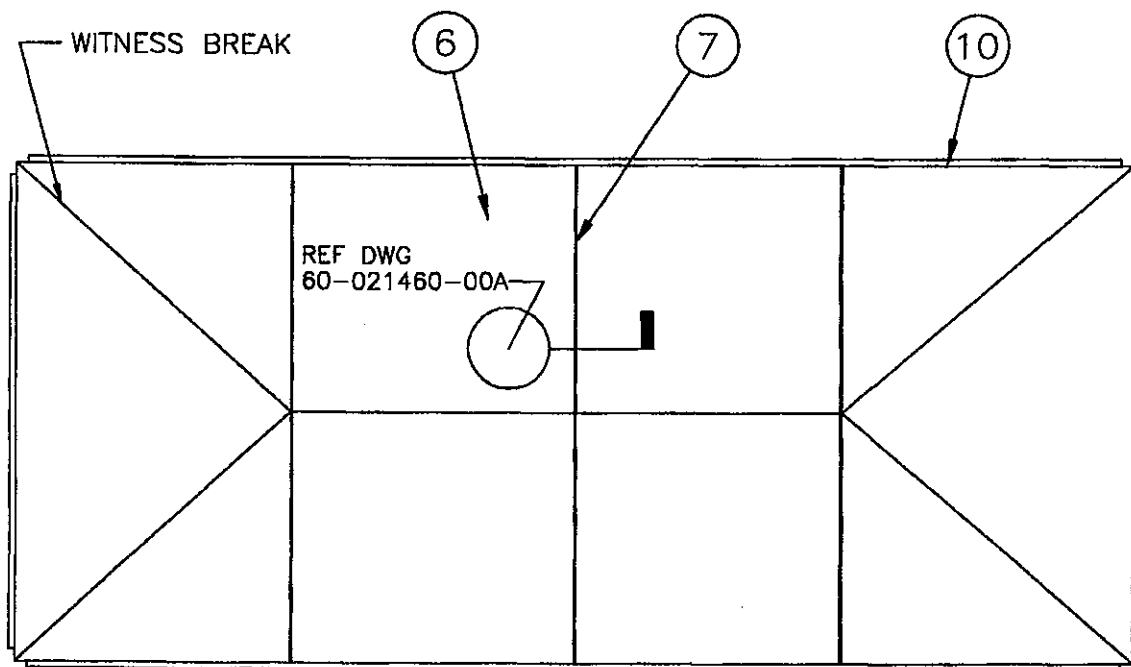
LEGEND

- ① = LOUVER SECTION (SHIP LOOSE)
- ② = LOUVER HVBS (HIDDEN VERTICAL BLADE SUPPORT) REF. (SHIP SECTIONS ARE NOT ALWAYS NECESSARY AT SHORTER ENDS OF PENTHOUSES).
- ③ = HVBS ATTACHMENT ANGLE AT SHIP SECTIONS ONLY (SIZE VARIES). ATTACHES TO HVBS W/ 1/4"-20 X 1 1/2" HHB & SERRATED FLANGE NUT AT 18" O/C & 6" FROM ENDS IN FIELD.
- ④ = CORNER ATTACHMENT ANGLE ATTACHES TO LOUVER FRAMES (AT EACH CORNER) W/ #10 TEKS AT 18" O/C & 6" FROM ENDS. SHIPPED ATTACHED TO ONE FRAME @ PLANT ATTACHED TO ADJACENT FRAME IN FIELD BY OTHERS
- ⑤ = RAFTERS (SIZE VARIES) SPAN ACROSS SHORT SIDE OF PENTHOUSE AND ATTACHES TO HVBS - SIZE & NUMBER OF BOLTS VARY. SHIP LOOSE
- ⑥ = ROOF PANELS (46" WIDE MAX.), SIZE & THICKNESS VARIES. SHIP LOOSE
- ⑦ = CONTINUOUS "U" CLAMP ROOF SEAM ATTACHMENT. ATTACHES ROOF PANELS TOGETHER W/ 1/4"-20 X 1" HHB & SERRATED FLANGE NUT AT 18" O/C & 3" FROM ENDS IN FIELD. SHIP LOOSE
- ⑧ = EXTENDED CURB FLASHING, IF REQUIRED (NOT BY VENTEX).
- ⑨ = CORNER COVER ANGLE ATTACHES TO LOUVER FRAMES W/ #10 TEKS AT 18" O/C & 6" FROM ENDS. SHIPPED ATTACHED TO ONE FRAME @ PLANT AND ATTACHED TO ADJACENT FRAME IN FIELD BY OTHERS.
- ⑩ = WATER BAFFLE ZEE ATTACHES THROUGH ROOF PANEL & LOUVER HEAD FRAME W/ #10 TEKS AT 18" O/C & 3" FROM ENDS IN FIELD. (MUST START 1" AWAY FROM ENDS IN FIELD) SHIP LOOSE.
- ⑪ = ARCHITECTURAL SHIP SECTION ON NON-DRAINABLE LOUVER MODELS. REF DWG 60-021488-00A FOR CONNECTION DETAIL
- ⑫ = VISIBLE MULLIONS ARE REQ'D FOR ANY DRAINABLE LOUVER MODEL OVER 10'-0". REF DWG 60-021495-00A FOR CONNECTION DETAIL.

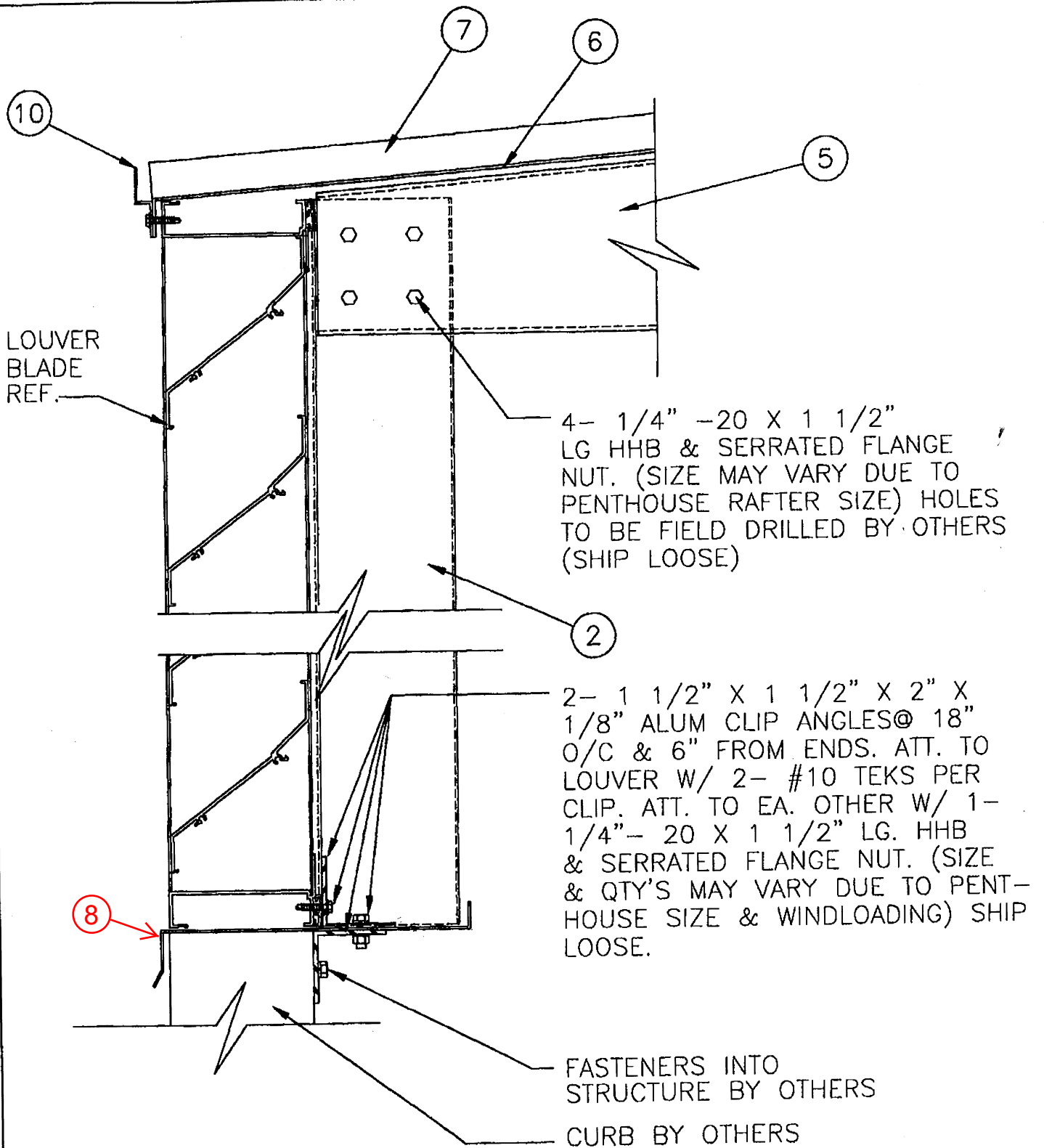




PLANVIEW FOR A BOXED CORNER PENTHOUSE



ROOF PLAN FOR A BOXED CORNER PENTHOUSE



EXP GAP
WHERE REQ'D

BLADE BRACE

